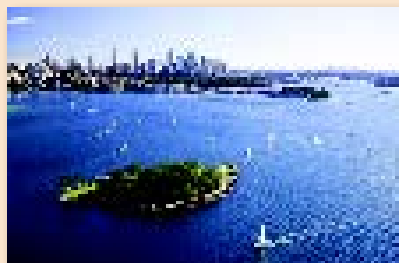


# Affordable Sailing on Sydney and Middle Harbour



## Middle Harbour Memberships now available

### Beneteau Oceanis 37\*

Gold Membership just \$1100\*/mth

Silver Membership only \$800\*/mth

### Beneteau Oceanis 41.1

Gold Membership just \$1190\*/mth

Silver Membership only \$850\*/mth

*Coming Soon*

### Bénéteau Océanis 38.1

Gold Membership just \$1200\*/mth

Silver membership only \$900\*/mth

## Sydney Harbour

Rushcutters Bay

## Memberships now available

### Jeanneau 42DS

Gold Membership just \$1280\*/mth

Silver Membership only \$940\*/mth

### Beneteau Oceanis 38

Gold Membership just \$1160\*/mth

Silver Membership only \$830\*/mth

**SailTime™** is the new way to sail - guaranteed monthly access to a luxury yacht through a boating schedule that you design. Whether you want to sail for a half day, a full day or on a weekend a SailTime Membership is the least expensive way to go sailing. So why not join over 1000 existing members in North America and Australia who have stopped worrying about the cost of marina fees, maintenance costs or insurance. With SailTime Sydney and Middle Harbour you can enjoy sailing on a luxury yacht in our professionally managed fleet for less than you would probably pay for a berth.

### Exclusive Sailing without the commitment of buying a boat

With a low joining fee and minimum 1 year commitment, SailTime makes financial sense in the current economic times. No longer do you need to invest in your own boat, with SailTime you enjoy exclusive access to a quality boat that is fully maintained, serviced, berthed and insured. We take care of the worry and costs whilst you enjoy your carefree sailing.

### SailTime PLUS

Additionally, as a SailTime member you have access, via SailTime Global Access to any of our 30+ bases and fleet of over 100 boats in North America and Australia.

### Enjoy sailing Sydney and Middle Harbour

Sydney Harbour is often referred to as the most beautiful natural harbour in the world. Those who come to see it will understand why. The 240 kilometres of shoreline encompass approximately 54 square kilometres of water, which is an enormous expanse of water to explore and discovery.



On a warm sunny day, the harbour is a vibrant blue and dotted with hundreds of sailing boats, cruise boats and ferries. Whether you chose to sail past the iconic Opera house and under the Sydney Harbour Bridge or just drop anchor in one of the many bays. You can be sure it will be a memorable day of sailing

Tucked in between Middle Head and Dobroyd Head is the entrance to a stunning mini cruising ground for local and visiting sailors looking to get away from the hustle and bustle of the main harbour.

Middle Harbour may take you only an hour or two to sail from one end to the other, but you can also spend days poking around its beautiful bays, bushwalking in its parks and reserves, eating at nearby restaurants and cafés, or simply lazing on your boat.

#### **Moorings, anchorages & public berthing**

There are numerous amazing places to anchor or berth for the night in both Middle Harbour and Sydney Harbour both to the east and west of the Harbour Bridge. You can also visit one of the many Yacht clubs including, Middle Harbour, Cruising Yacht Club Australia or sail into Darling Harbour or Birkenhead Point.

#### **SailTime Membership**

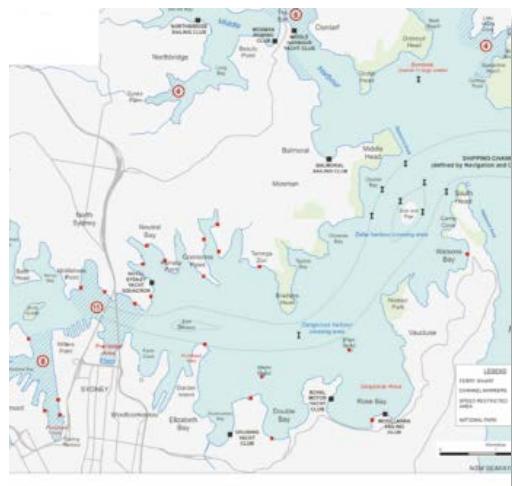
All new members will benefit from a two-day induction program to ensure you are familiar with your new yacht and the local area before heading off on your own. We also have a comprehensive program of training available with highly experienced RYA/YA instructors through SailTime Training – you can decide how far you want to go from Novice to Yacht Master level.

#### **Owner Member Program also available**

If you're looking for a smart and cost effective way to buy a new yacht in your local waterway with all the benefits of ownership but with the expenses taken care of and regular monthly payments to help offset your marine mortgage, then ask about our Owner Members program.

For more information call **1 300 944 974** or visit

[www.sailtimeaustralia.com.au](http://www.sailtimeaustralia.com.au)



\* Plus one of joining fee of \$1800 for Gold membership and \$1300 for Silver membership – please contact us for more information.